
SYPHILIS EPIDEMIC RESPONSE TEAM

CONSTANCE S. JONES
Syphilis Epidemic Response Coordinator

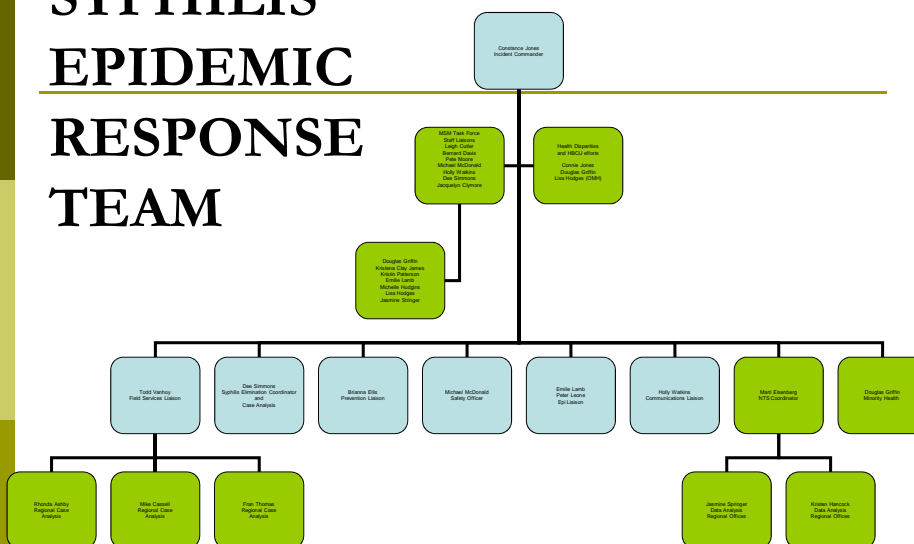
NC Increase in Syphilis

- ▣ Urban counties
- ▣ Males who have sex with males (MSM)
- ▣ Highest rates 20-24 years old
- ▣ Wayne County

Syphilis Epidemic Response Team

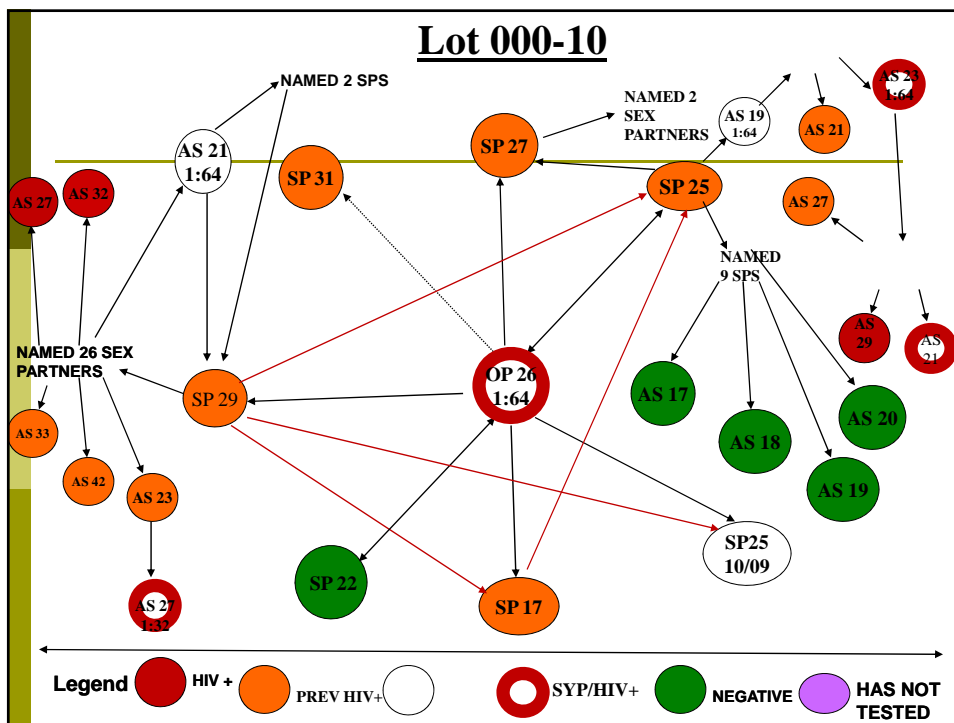
- ▣ Field Services
- ▣ Syphilis Elimination Coordinator
- ▣ Prevention
- ▣ Safety Officer
- ▣ Surveillance and Epidemiology
- ▣ Communications
- ▣ Non-Traditional Sites Coordinator
- ▣ Minority Health

SYPHILIS EPIDEMIC RESPONSE TEAM



Increase in MSM Cases

- ▣ Internet
- ▣ Travel
- ▣ Clubs
- ▣ Social Networking



MSM TASK FORCE

- ▣ Developing Strategies
- ▣ Prevention Messages
- ▣ Creating a Safe Space
- ▣ Houses and Balls
- ▣ Care



