

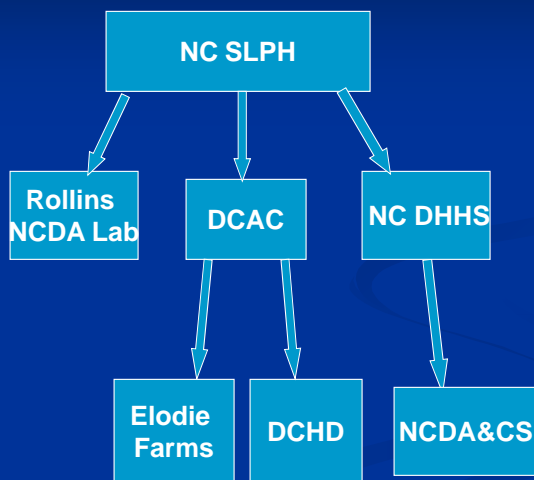
# Rabid Donkey on a Farm

Marilyn Goss Haskell, DVM MPH  
NC DHHS Public Health Veterinarian

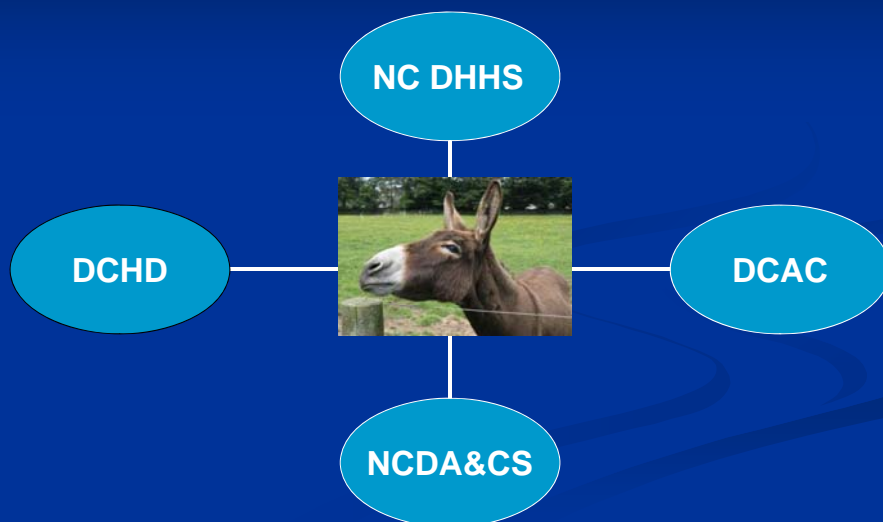
SLPH reports positive RFA - Donkey  
Elodie Farms – Rougemont, NC  
April 9, 2010 - Friday 3:42 pm

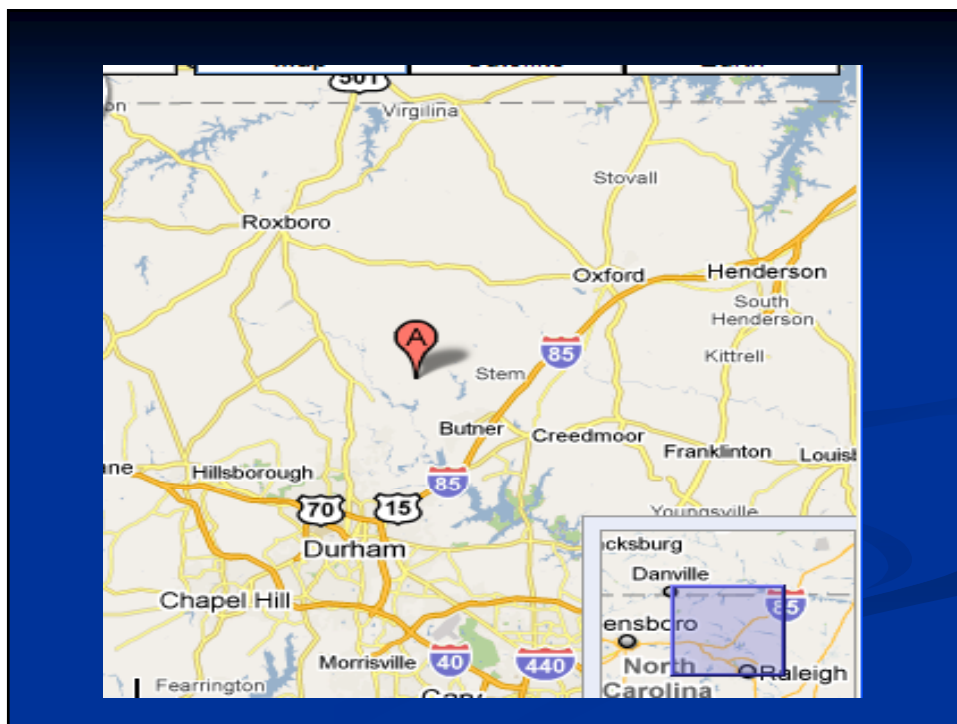


### Positive RFA Reporting Chain



### Multi-Agency Conference Call Monday, April 12, 2010





## Multi-agency Porch Meeting at Elodie Farms with Owner Tuesday, April 13, 2010





## March 2010



SUN	MON	TUES	WEDS	THURS	FRI	SAT
	1	2	3	4	5	6
7	8	9	10	11* Begin date -15 day trace back	12	13
14	15	16	17	18	19	20
21	22	23	24	25	26 Eddie Acted Abnormal	27
28	29	30	31			

## April 2010



SUN	MON	TUES	WEDS	THURS	FRI	SAT
				1 Isolates himself	2	3
4	5	6	7 Eddie Aggressive-Lunges	8 * Eddie Dies	9 Eddie RFA + SLPH	10
11	12 Multi-Agency CC	13 Multi Agency meeting at farm NCDAs Durham ACS - Animal Inspection, tag, ID- Begin 15d confinement	14	15	16	17
18	19	20	21	22	23	24
25	26	27	28 * End 15 d conf.	29	30	

## History/Vaccination – Animals 4/13/2010

- Premises 1– Elodie – Durham
  - Farm Dog “Gus”- current
  - 2 horses, 1 steer - unvaccinated
  - 32 Goats- unvaccinated
  - 1 Barn cat – unvaccinated, MIA
  
- Premises 2– adjacent to Elodie – Durham
  - Farm worker
  - 22 kids, 2 adults goats - unvaccinated

## History – Animals

4/13/2010

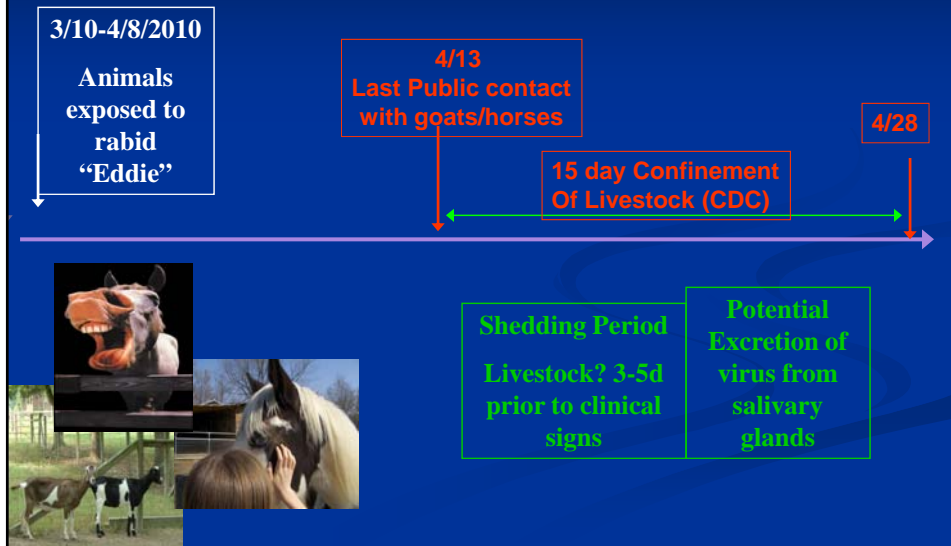
- Premises 3- Durham Co.
  - 2 kids arrived from Elodie 3/14 - unvaccinated
  - Born 2/23, kept as pets
  
- Premises 4- Durham Co.
  - 2 twin kids arrived from Elodie 3/26 - unvaccinated
  - Born 3/19
  
- \*Premises 5- Orange Co.
  - 6 kids arrived from Elodie 3/14 (born 2/23)
    - 3 died of bloat; 3 alive & healthy – DVM vaccinated 3/13; moved back to Elodie in April

## 15 day Animal Confinement

### CDC Consultation

- Rabies virus shedding in livestock
- Recommended 15 day observation/confinement from last date of public exposure (4/13/2010)
- Ending on 4/28/2010
  
- Source: CDC Rabies in a Llama – Oklahoma. MMWR, 1990;39(12).

## Timeline – 15 day Confinement of Livestock Exposed to “Eddie”



## Order of Confinement

- 15 Day Confinement
- Signed Gayle B. Harris
- 4/13 – 4/28/2010
- For: Goats, horses & steer exposed to “Eddie”
- From: Last date of public exposure 4-13-2010



COUNTY OF DURHAM  
HEALTH DEPARTMENT

**ORDER OF CONFINEMENT**

I, Gayle B. Harris, Durham County Health Director, have been advised of the following facts:

- (1) Dove Antiques is the owner of Elodie Farms. On Thursday, April 8, 2010 a donkey on the farm died of confirmed rabies. It should be noted that due to the potential exposure of the goat herd to the deceased donkey, that the goat herd on Elodie Farms should be confined for a period of 15 days beginning today. Confinement of the goat herd should involve isolation from the public, and contact with humans should be limited to a few individuals using personal protective equipment (gloves, coveralls) to prevent unnecessary exposures.
- (2) NC General Statute 106-402 states:  
“Any animal or poultry affected with or exposed to a contagious animal disease shall be confined by the owner of the animal or poultry or the owner or operator of the premises in such a manner, by penning or otherwise securing and actually isolating the animal or poultry from the approach or contact with other animals or poultry not to all feed, it shall not have access to any ditch, canal, branch, creek, river, or other surface water that passes beyond the affected premises, to any public road, or to the premises of any other person. (1939, c. 360, s. 2; 1969, c. 693, s. 2; 2001-12, s. 8; 2003-6, s. 1; 2005-21, s. 1; 2009-103, s. 1)”

Pursuant to the power and duties prescribed by me and NC General Statute 106-402 IT IS HEREBY ORDERED, that Dove Antiques comply with a 15 day confinement of the goat herd at Elodie Farms.

This is the 13<sup>th</sup> day of April 2010.

Gayle B. Harris, MPH  
Health Director

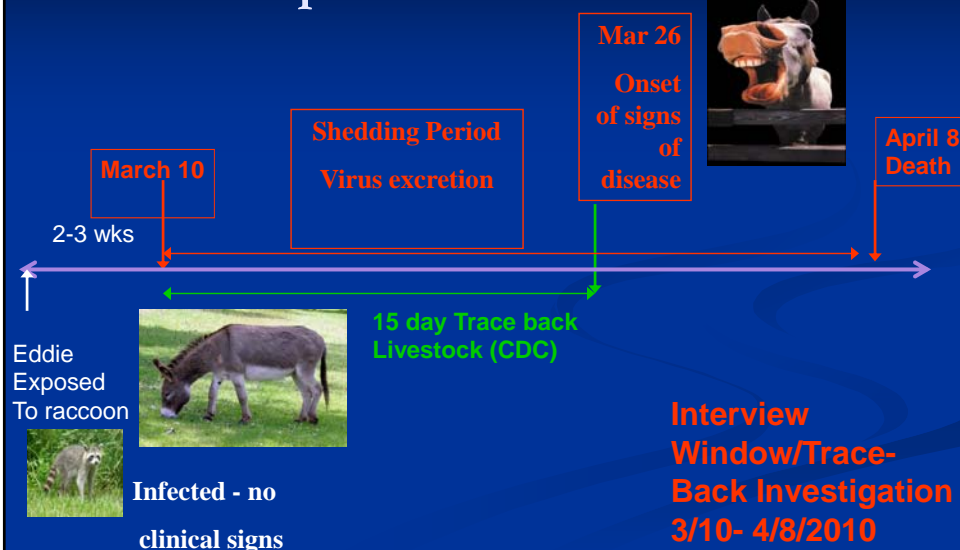
## Public Health Exposure Assessment Investigation- 15d trace back

### CDC Consultation

- Rabid livestock – Recommended 15 day trace back for human/animal exposures to “Eddie”\*
- Identify all human and animal exposures to “Eddie” tracing backwards 15 days from first day of behavior abnormality or clinical signs (3/10)

\*Source: CDC Rabies in a Llama – Oklahoma. MMWR, 1990;39(12).

## “Eddie” Timeline Exposure Assessments



## Exposure Assessments March 10 – April 8, 2010

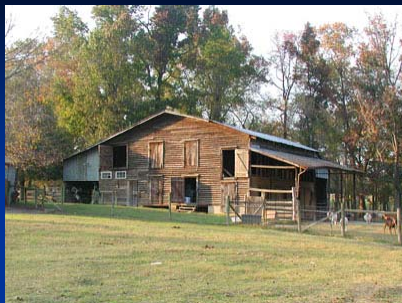


## Elodie Farms' Events



- Agrotourism
- Farm Tours
- Summer Camps
- School visits
- Weddings, Porch dinners
- Cheese Making Class

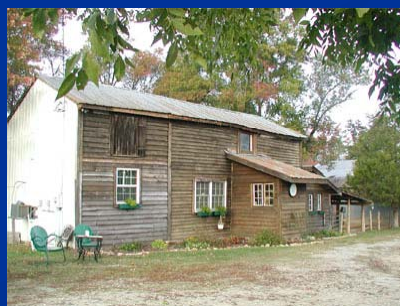
Source: <http://www.elodiefarms.com/>



Goat Feeding Shed

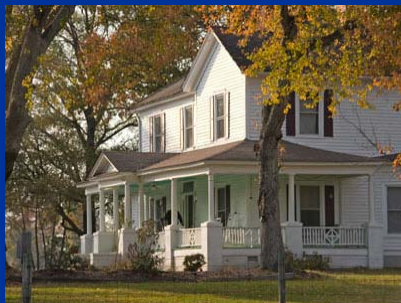


Goats in Milking Parlor



Cheese kitchen

## Porch Dinners



# March 2010



SUN	MON	TUES	WEDS	THURS	FRI	SAT
	1	2	3	4	5	6
7	8	9	10 MS Porch Dinner	11* Begin date- 15 day trace back	12	13 MS
14 MS	15 MS	16 DCPS	17	18	19	20 MS
21 MS	22 MS	23	24 MS	25	26 Eddie Acted Abnormal	27 MS Durham Central Mkt
28 MS	29 MS	30	31 MS			

# April 2010



SUN	MON	TUES	WEDS	THURS	FRI	SAT
				1 Isolates himself	2	3 MS
4 MS	5 MS	6	7 MS Aggressive Lunges	8 * Eddie Dies	9 Eddie RFA + SLPH	10
11	12 Multi- Agency CC	13 Multi Agency meeting at <u>farm</u> NCDA Durham ACS - Animal Inspection, tag,, ID- Begin 15d Containment	14	15	16	17
18	19	20	21	22	23	24
25	26	27	28 * End 15d conf	29	30 MOAs, signs 6 mon	

# Rabies Exposure Questionnaire

## RABIES EXPOSURE QUESTIONNAIRE FOR PERSONS ON ELODIE FARMS To assist in determining if PEP is required

Animal = Eddie the Donkey, Confirmed Rabid on 9 APR 2010 @ SLPH  
This animal may have been shedding rabies as early as 10 MAR 2010  
All questions below pertain to potential exposures sustained on or after 10 MAR 2010

Last name: \_\_\_\_\_ First name: \_\_\_\_\_  
Address: \_\_\_\_\_ City: \_\_\_\_\_ Zip: \_\_\_\_\_  
Home phone: \_\_\_\_\_ Work phone: \_\_\_\_\_

1. Age: \_\_\_\_\_ Gender: M F

2. Did you have any physical contact with the animal, his secretions, his laboratory specimen, or his tissue?  
Yes No

3. Were you bitten by the animal? Yes No If yes, where were you bitten? \_\_\_\_\_  
Date of bite: \_\_\_\_\_

4. Did you have an open wound (one that was open and bleeding within the past 24 hours) or recent abrasion that came into contact with the animal's fluids?

Yes No If yes, date of contact \_\_\_\_\_  
Location of wound \_\_\_\_\_  
Describe wound & when occurred \_\_\_\_\_

Which fluids?

- saliva \_\_\_\_\_  
- sputum \_\_\_\_\_  
- respiratory secretions \_\_\_\_\_  
- tears \_\_\_\_\_  
- vomitus \_\_\_\_\_  
- other (specify) \_\_\_\_\_

5. Did any of the animal's secretions come into contact with any of your mucous membranes (eyes, nose, mouth)? Yes No

If yes, which fluids?  
- saliva \_\_\_\_\_  
- sputum \_\_\_\_\_  
- respiratory secretions \_\_\_\_\_  
- tears \_\_\_\_\_  
- vomitus \_\_\_\_\_  
- other (specify) \_\_\_\_\_

Describe the circumstances: \_\_\_\_\_

6. Did the animal or its cough or sneeze enter your face such that you think contact respiratory secretions may have been? Yes No  
If yes, were you wearing a mask? Yes No  
If yes, were you wearing eye protection? Yes No

7. Have you ever been vaccinated against rabies? Yes No  
If yes, did you ever have a previous exposure (possibly bite)? Yes No  
If no, did you ever have a significant exposure (as defined in any of the above questions)? Yes No

8. In your opinion, if you think that you sustained a significant exposure that has not been addressed in any of the above questions, please state below: \_\_\_\_\_

DATE: \_\_\_\_\_ TIME: \_\_\_\_\_  
NAME: \_\_\_\_\_ PHONE: \_\_\_\_\_  
ADDRESS: \_\_\_\_\_

### Exposure to donkey

- ❖ Any direct or suspect contact
- ❖ Petting donkey on head
- ❖ Fed grass
- ❖ Fed apples

## PEP Assessment Summary Tracebacks 3/10 – 4/8/2010 DCHD

- Elodie Farm Calender of Events & Dates
- List of attendees at events and contact information
- Questionnaire – Interviews
- PEP Assessments
- Farm family, friends, workers (2/2 children, 1/5 adults)
- 3 Schools (17/64 children (2-9 yr), 2/3 parents, 0/4 teachers)
- **Total PEP 22 begun**

## 6 Month Quarantine for all animals exposed to Eddie?

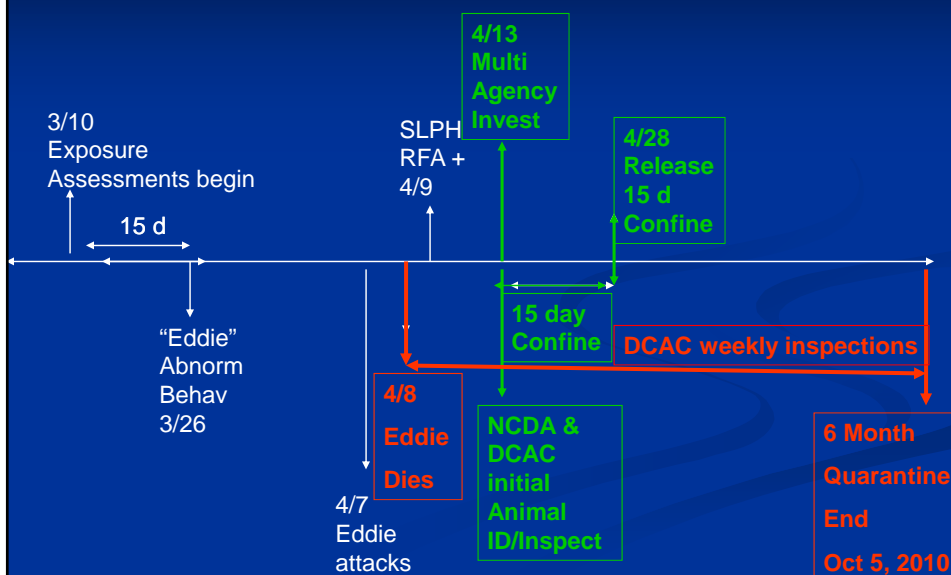
- CDC recommendation\*
  - Meets 2008 Rabies Compendium Recommendations
  - Llama to llama and kudu transmission\*\*
  - Direct contact, opportunity for unobserved bites
- Evaluation of animal enclosures (double fence no human contact except designated caretaker, no movement w/o approval by DCHD)
- MOAs delivered to 5 premises by DCAC & OCAC
- DCAC & OCAC weekly inspections of animals

Source:

\*Email communication CDC; Rupprecht, Blanton; April 20, 2010

\*\*CDC Rabies in a Llama – Oklahoma. MMWR, 1990;39(12).

## 6 Month Quarantine Timeline



## Current Disposition of Animals 6 Months Quarantine April 23, 2010

- Premises 1
- Premises 2
- Premises 3
- Premises 4
- Premises 5 – 2 goats moved to Elodie (under new MOA)

## Lessons Learned

- Prioritize and take one thing at a time, stay calm.
- Be flexible, adapt to changes.
- Keep lines of communication open – with everyone.
- Collaboration of all agency partners, from the beginning, benefited all.
- There is an ongoing need to educate livestock producers about rabies prevention and control.
- Farms that allow the public to come in contact with animals require education in infection control practices.
- This investigation was a “perfect example of public health at its best!” DCHD

## Acknowledgements

- Elodie Farms - Dave Artigues
- DCHD – Gayle B. Harris, MPH, Dr. Arlene Sena, Pam Weaver, RN, Robin Livingstone, RN
- DCAC – Lt. Duarte, ACO Fitzherbert
- Orange Co HD & AC \_ Rosemary Summers, Irene Phipps, Bob Marotto
- CDC Rabies Section – Dr. Charles Rupprecht, Jesse Blanton, MPH
- NC DHHS – Janine Dailey, MD, Carl Williams, DVM, Evelyn Foust, MPH
- NC SLPH
- NCDA&CS

## QUESTIONS?

**DO NOT TOUCH THESE ANIMALS!**

**ANIMALS EXPOSED TO  
RABIES**



**IF YOU HAVE QUESTIONS CALL  
DURHAM COUNTY HEALTH DEPARTMENT  
XXX-XXX-XXXX**