

Gillings School of Global Public Health

**Fall 2008 Faculty-Staff Meeting
Business & Finance Review**



UNC
GILLINGS SCHOOL OF
GLOBAL PUBLIC HEALTH

Finances

Good News

The School ended FY08 in good financial condition with approximately 9% carry forward throughout the School.

Gillings gift energizes key missions of the School and helps to balance the School's overall funding portfolio.

Research awards that the School administers have remained steady, as have contracts & grants expenditures.

Challenges

The majority of state budget increases over the last 3 years were due to DE funding transition, special initiatives, and LSI.

2% state budget cut being implemented this fall, with additional budget cuts likely unless economy improves.

Awards by PI decreased in FY08.



Overall School Financial Summary FY2007-2008

In millions

Sources of Funds

State Appropriation	\$31.2
Receipts	\$2.0
Indirect Cost Recovery- Allocated to the School	\$11.8
Contracts & Grants- Direct Support <u>Administered</u> by School	\$48.7
Trusts	\$8.6
Services & Other	\$4.7
Total	\$107.0

Uses of Funds

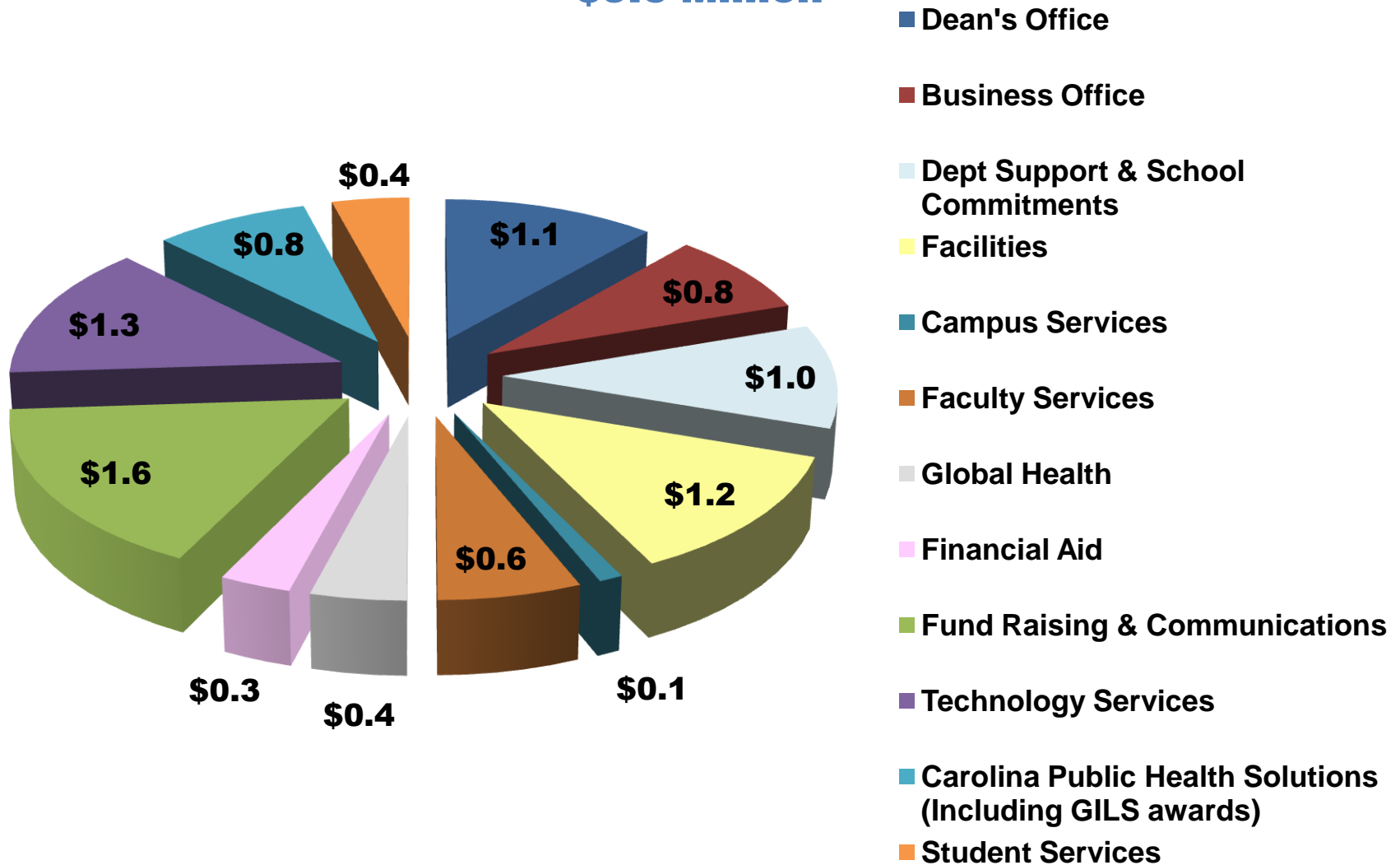
Compensation	\$66.6
Student Aid and Grants	\$4.2
Other Grants	\$8.0
Operations	\$17.4
Capital	\$1.5
Reserves -Restricted & Unrestricted for Future Commitments (within Departments and Dean's Office)	\$9.3
Total	\$107.0

Note: Contracts & Grants include only direct expenditures of grants administered by the School. The School's Principal Investigators' FY08 awards total \$103,834,751 that are administered both within and outside the School.

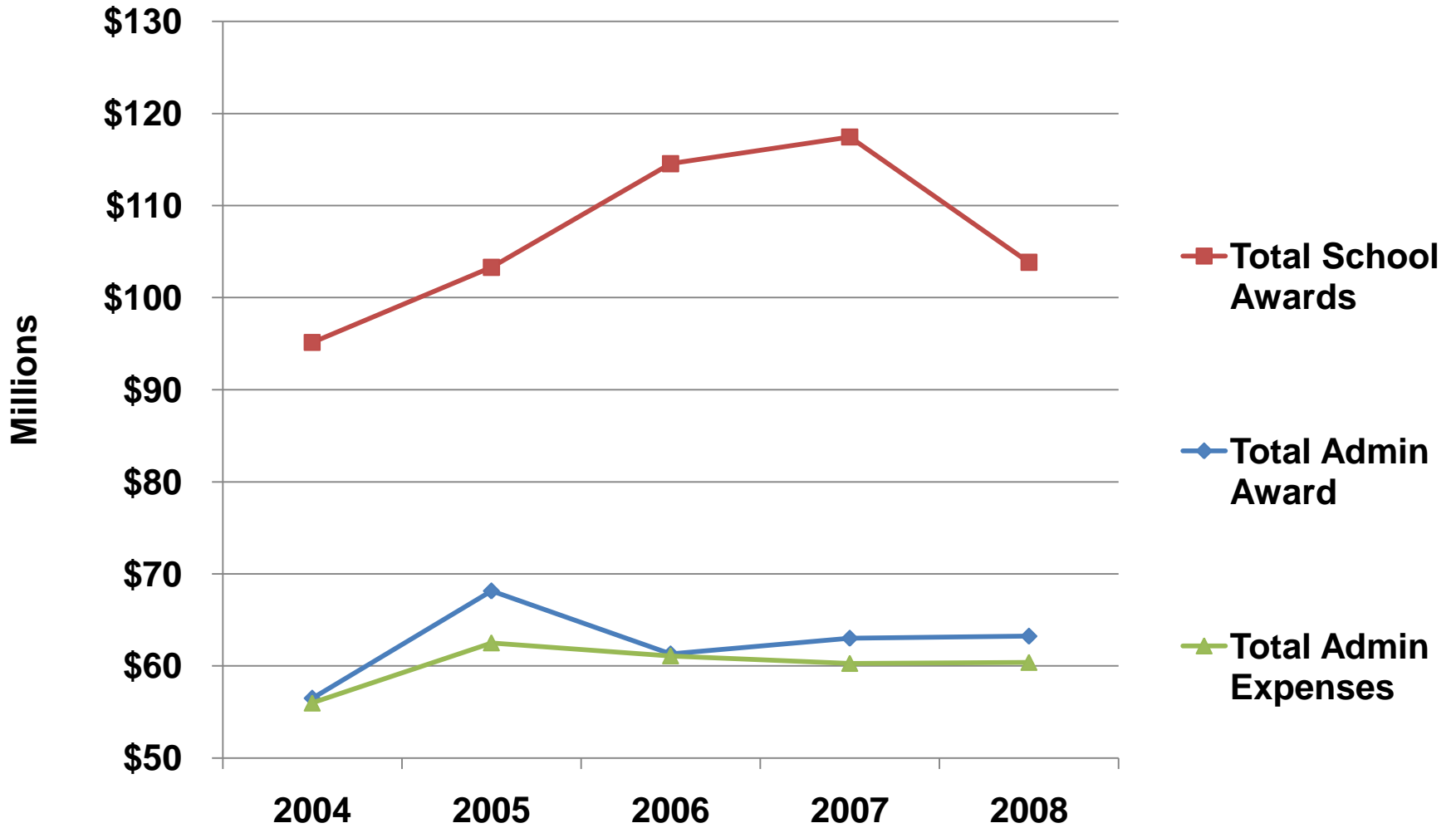


Central School Expenses for FY 2007-2008

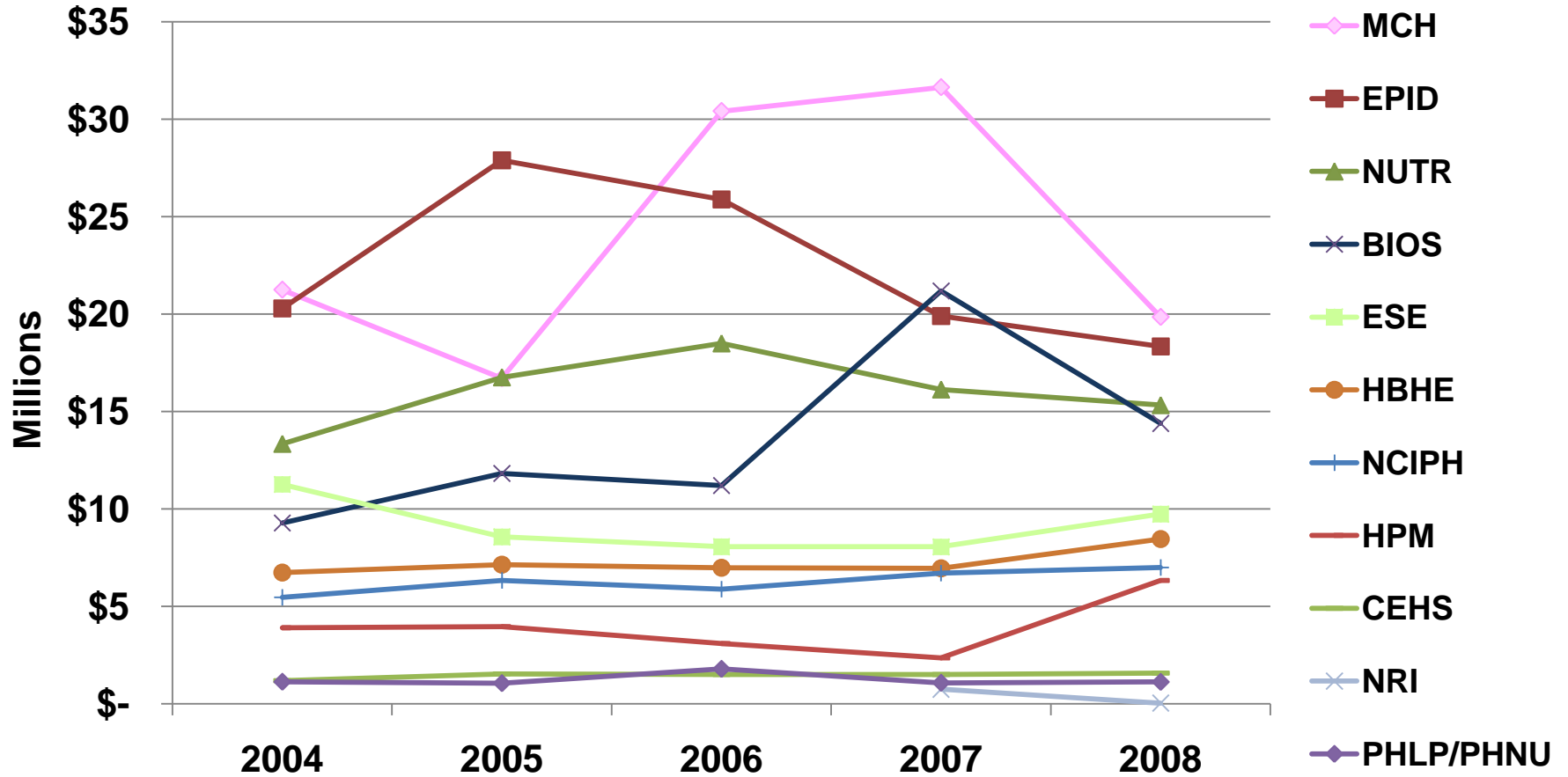
\$9.6 Million



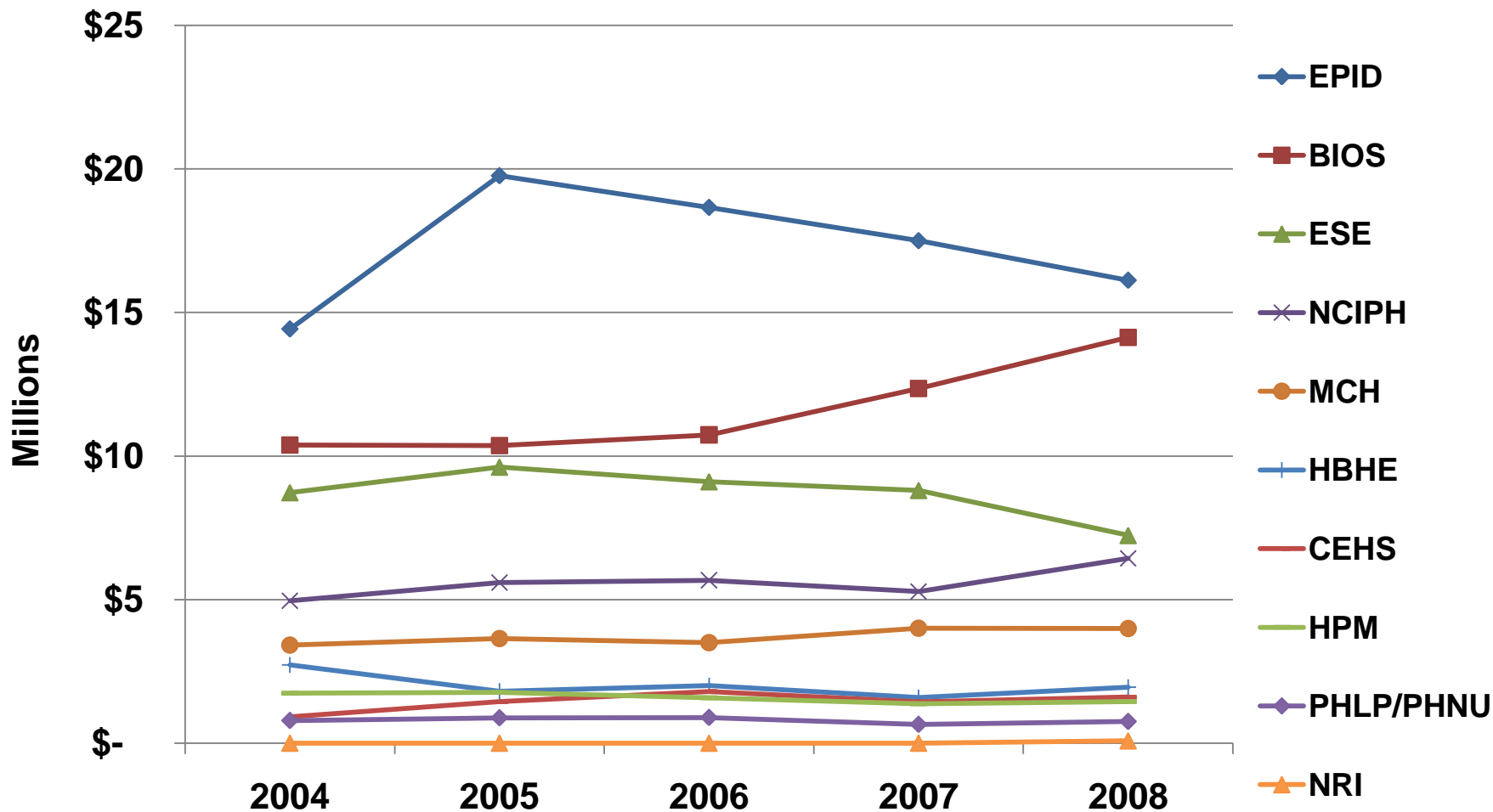
SPH Grant and Contract Activity



SPH Total Contract & Grant Awards By PI Home Dept

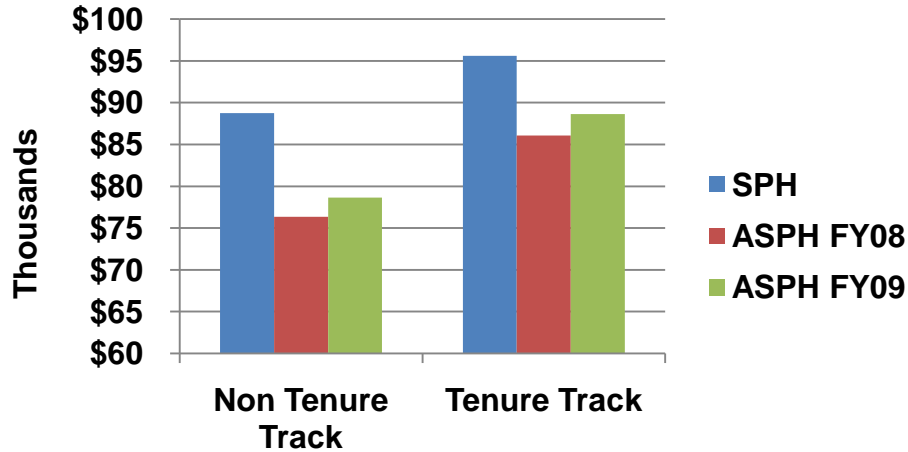


SPH Administered Grant and Contract Expenditures

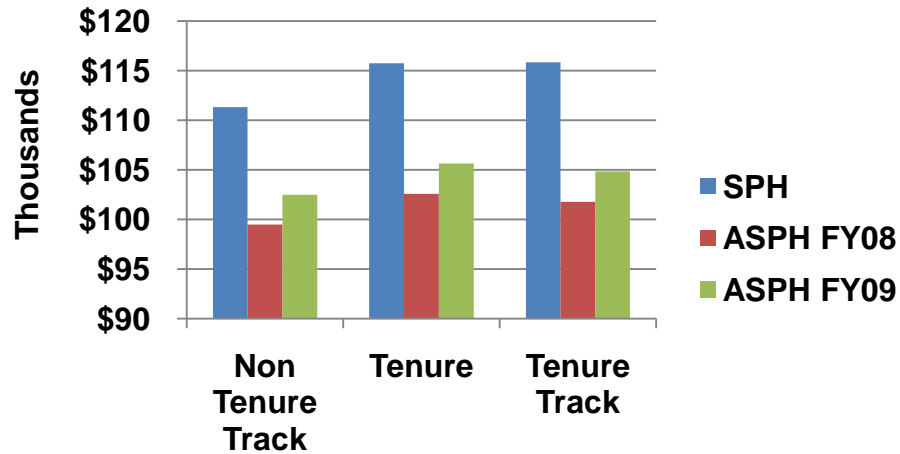


Faculty Salaries by Rank Compared to ASPH Mean Salaries FY2008-2009

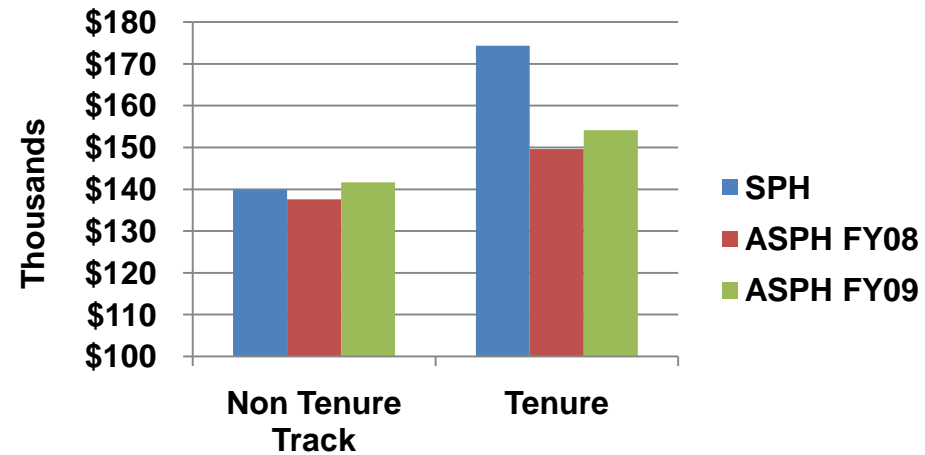
Assistant Professor



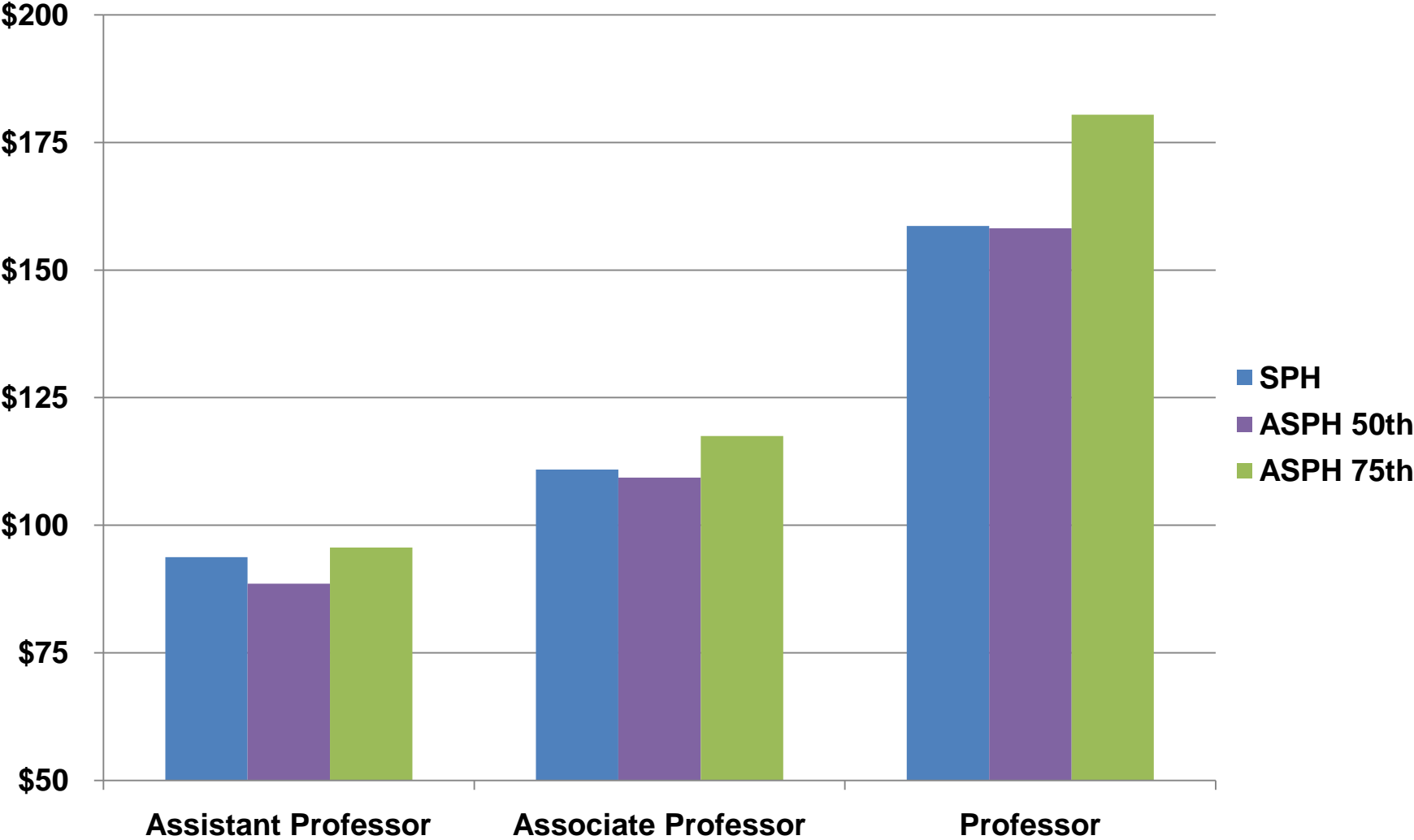
Associate Professor



Professor



FY2008-2009 Faculty Salaries Compared to ASPH 50th & 75th Percentile Benchmarks



Progress on Facilities

- Renewed facilities in Rosenau;
- Classrooms will be brought back on line this year (eg. Rosenau 235);
- Meeting space that has been used for classrooms will revert back to meeting spaces (e.g. Hooker 0003);
- More wireless access points will be added soon.

Rosenau 228
Before
Renovation



Rosenau 228
After
Renovation



Finances: Challenges Building Summary

- **Building debt will increase with Rosenau renovation;**
- **Resources must be found to address renovation needs in McGavran.**

Outstanding Debt Service

Hooker-Outstanding Total Debt Service	\$6,318,159
Estimated Rosenau Total Debt Service	\$1,350,000
<u>Total Outstanding Debt Service</u>	<u>\$7,668,159</u>

**Annual Impact of Plant Obligations Without
McGavran Renovation Costs**

Hooker Debt Service	\$250,000
Rosenau Debt Service	\$50,000
	\$300,000
<u>Plant Maintenance</u>	<u>\$225,000</u>
<u>Financial Impact of Plant</u>	<u>\$525,000</u>



Summary of SPH Finances

- **Overall SPH is well positioned for the future.**
- **There are financial challenges that we must be prepared to manage:**
 - **Reduced state support due to ailing economy,**
 - **Phase out of receipt based DE funding,**
 - **Current environment for extramural funding,**
 - **Existing building debt and new renovation expenses.**

